

Quick Reference Guide ITL Programming Systems

DPS

Device Programming System



A.u.S. Spielgeräte GesmbH
Scheydgasse 48 A-1210 Wien
Tel. +43-1-271 66 00 Fax. +43-1-271 66 00 75
E-mail: verkauf@aus.at
<http://www.aus.at> <http://www.garlando.at>
Öffnungszeiten: Mo-Do 9-18 und Fr. 9-17 Uhr

Quick Reference Guide - DPS

General Overview

- The DPS can be divided into two parts
 - PC side
 - DA3 side



Quick Reference Guide - DPS

PC side - Overview

- Load firmware and dataset files into the library
- Configure firmware/dataset files in the library



PC side

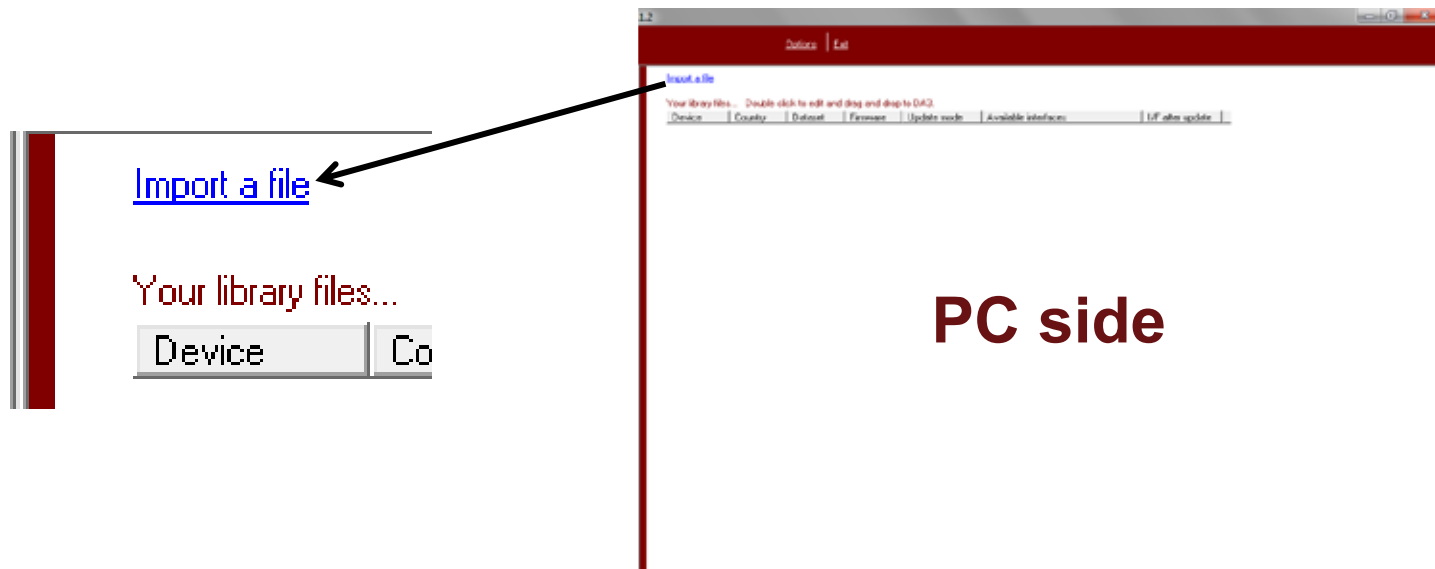


A.u.S. Spielgeräte GesmbH
Scheydgasse 48 A-1210 Wien
Tel. +43-1-271 66 00 Fax.+43-1-271 66 00 75
E-mail: verkauf@aus.at
<http://www.aus.at> <http://www.garlando.at>
Öffnungszeiten: Mo-Do 9-18 und Fr. 9-17 Uhr

Quick Reference Guide - DPS

PC side – load firmware/dataset files into the library

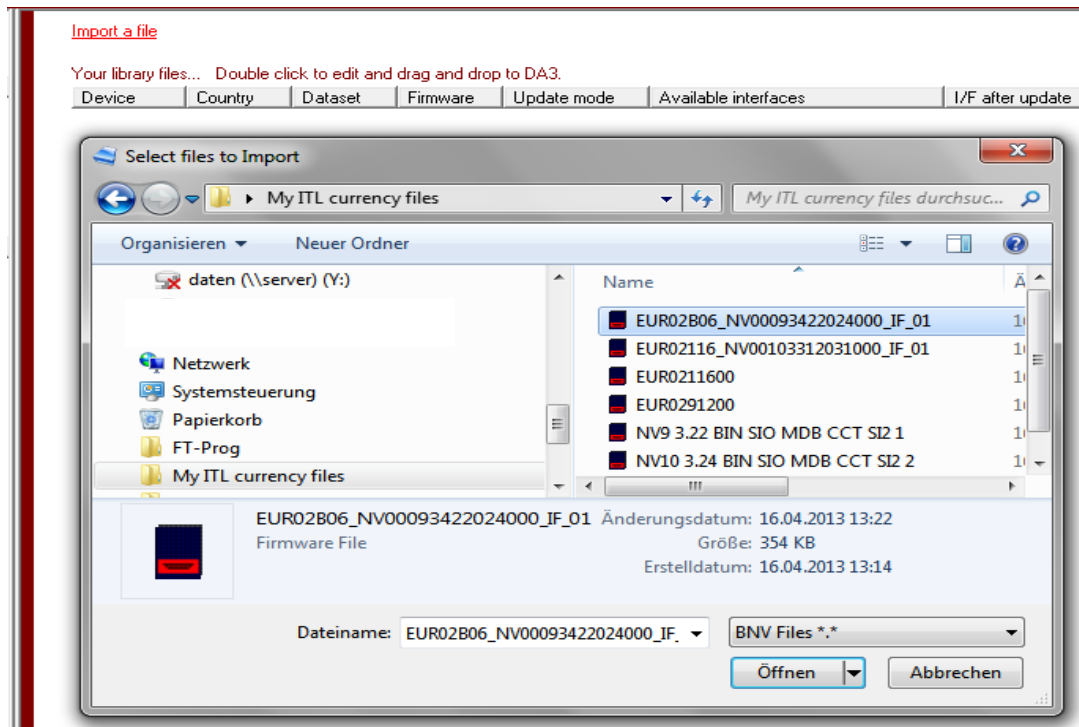
- Click on **Import a file** and load firmware/dataset file into the library



Quick Reference Guide - DPS

PC side – load firmware/dataset files into the library

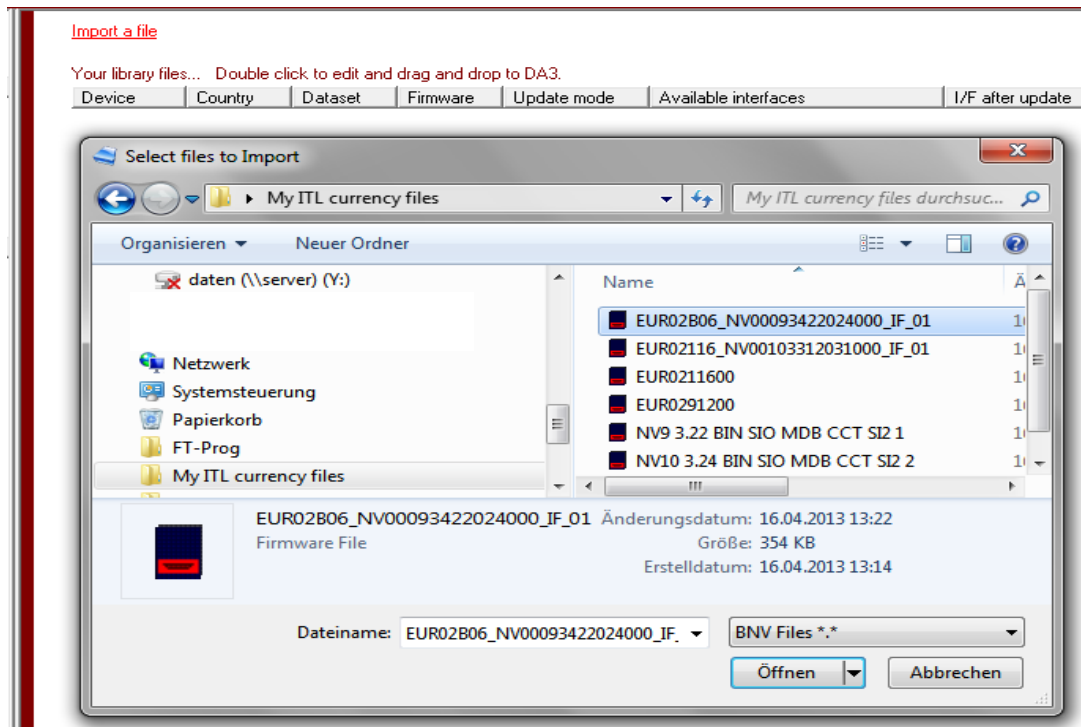
- Chose the directory on your PC where ITL firmware/dataset files are stored



Quick Reference Guide - DPS

PC side – load firmware/dataset files into the library

- Select a firmware/dataset file and click on **Open** to load a file into the library



Quick Reference Guide - DPS

PC side – load firmware/dataset files into the library

[Import a file](#)

Your library files... Double click to edit and drag and drop to DA3.

Device	Country	Dataset	Firmware	Update mode	Available interfaces	I/F after update
NV9_11USB	EURO	EUR02B06	342	Match	SSP,PAR,PL1,SIO,CCT,MDB,SP4	SSP
NV10USB	EURO	EUR02116	331	Match	SSP,PAR,PL1,SIO,CCT,MDB,SP4	SSP
NV9	EURO	EUR02912	-	Match	-	-
NV10	EURO	EUR02116	-	Match	-	-
NV9	-	-	322	Match	PAR,PL1,SSP,BIN	N/A
NV9	-	-	322	Match	PAR,PL1,SSP,SIO	N/A
NV9	-	-	322	Match	PAR,PL1,SSP,MDB	N/A
NV9	-	-	322	Match	PAR,PL1,SSP,CCT	N/A
NV9	-	-	322	Match	PAR,PL1,SSP,SI2	N/A
NV9s	-	-	322	Match	PAR,PL1,SSP,BIN	N/A
NV9s	-	-	322	Match	PAR,PL1,SSP,SIO	N/A
NV9s	-	-	322	Match	PAR,PL1,SSP,MDB	N/A
NV9s	-	-	322	Match	PAR,PL1,SSP,CCT	N/A
NV9s	-	-	322	Match	PAR,PL1,SSP,SI2	N/A
NV10s	-	-	326	Match	PAR,PL1,SSP,BIN	N/A
NV10	-	-	326	Match	PAR,PL1,SSP,BIN	N/A
NV10s	-	-	326	Match	PAR,PL1,SSP,CCT	N/A
NV10	-	-	326	Match	PAR,PL1,SSP,CCT	N/A
NV10s	-	-	326	Match	PAR,PL1,SSP,MDB	N/A
NV10	-	-	326	Match	PAR,PL1,SSP,MDB	N/A
NV10s	-	-	326	Match	PAR,PL1,SSP,SI2	N/A
NV10	-	-	326	Match	PAR,PL1,SSP,SI2	N/A
NV10s	-	-	326	Match	PAR,PL1,SSP,SIO	N/A
NV10	-	-	326	Match	PAR,PL1,SSP,SIO	N/A



Quick Reference Guide - DPS

PC side – configure firmware/dataset files

- ITL firmware/dataset files can be configured in two different update modes
 - Match (default)
 - DA3 checks current firmware and dataset version of validator and updates only when a newer version of this firmware/dataset is loaded in the DA3 (no changes to any settings possible)
 - Override
 - Overrides validator with configured settings (firmware, dataset, protocol and protocol options)



Quick Reference Guide - DPS

PC side – configure firmware/dataset files

- A double click on a file in the library allows to configure the update mode
- Selecting **Override** allows to set the protocol and its option flags
- A double click on a protocol option allows to enable or disable a protocol option
- Click on **Save** when all settings are done



Quick Reference Guide - DPS

PC side – configure firmware/dataset files

NV9_11USB 342 EURO EUR02B06

Set Options

Interface co...	Description	Option	Value
<input checked="" type="checkbox"/> SSP	Secure Serial Protocol	Program card	Disabled
<input type="checkbox"/> PAR	Parallel 4 line I/O	Give credit after fraud detection	No change
<input type="checkbox"/> PL1	Pulse Output	Escrow reject for second note	No change
<input type="checkbox"/> SIO	Simple Serial	PSU Monitor	Enabled
<input type="checkbox"/> CCT	ccTalk BNV protocol	Channel Inhibits	No change
<input type="checkbox"/> MDB	Multi-Drop Bus vending	Stacker retry time	No change
<input type="checkbox"/> SP4	Special Pulse output	SSP Bus Address	No change
		eSSP Mandatory	No change

Update mode

Match

Override

Save Cancel



Quick Reference Guide - DPS

PC side – load configured files to DA3 side

- Drag and drop files from the library to the DA3

INNOVATIVE TECHNOLOGY LTD - Device Programming System Version 1.1.2

Device Programming System Options | Exit

ITL DA3 connected. [Change DA3 firmware version](#)

Item	Value
Serial number	0
Firmware version	1.13
Loaded files	0

Your Firmware files for update...

Device	Dataset	Firmware	Update mode	I/F after update
NV9_11USB	EUR02B06	342	Override	SSP
NV10USB	EUR02116	331	Match	SSP
NV9	EUR02912	-	Match	N/A
NV9	-	322	Match	N/A
NV9s	-	322	Match	N/A
NV10	EUR02116	-	Override	N/A
NV10	-	326	Override	N/A
NV10s	-	326	Override	N/A

[Import a file](#)

Your library files... Double click to edit and drag and drop to DA3.

Device	Country	Dataset	Firmware	Update mode	Available interfaces	I/F after update
NV9_11USB	EURO	EUR02B06	342	Override	SSP,PAR,PL1,SIO,CCT,MDB,SP4	SSP
NV10USB	EURO	EUR02116	331	Match	SSP,PAR,PL1,SIO,CCT,MDB,SP4	SSP
NV9	EURO	EUR02912	-	Match	-	-
NV10	EURO	EUR02116	-	Override	-	-
NV9	-	-	322	Match	PAR,PL1,SSP,BIN	N/A
NV9	-	-	322	Match	PAR,PL1,SSP,SIO	N/A
NV9	-	-	322	Match	PAR,PL1,SSP,MDB	N/A
NV9	-	-	322	Match	PAR,PL1,SSP,CCT	N/A
NV9	-	-	322	Match	PAR,PL1,SSP,SIO	N/A
NV9s	-	-	322	Match	PAR,PL1,SSP,BIN	N/A
NV9s	-	-	322	Match	PAR,PL1,SSP,SIO	N/A
NV9s	-	-	322	Match	PAR,PL1,SSP,MDB	N/A
NV9s	-	-	322	Match	PAR,PL1,SSP,CCT	N/A
NV9s	-	-	322	Match	PAR,PL1,SSP,SIO	N/A
NV10s	-	-	326	Match	PAR,PL1,SSP,BIN	N/A
NV10	-	-	326	Match	PAR,PL1,SSP,BIN	N/A
NV10s	-	-	326	Match	PAR,PL1,SSP,CCT	N/A
NV10	-	-	326	Match	PAR,PL1,SSP,CCT	N/A
NV10s	-	-	326	Override	PAR,PL1,SSP,MDB	N/A
NV10	-	-	326	Override	PAR,PL1,SSP,MDB	N/A
NV10s	-	-	326	Match	PAR,PL1,SSP,SIO	N/A
NV10	-	-	326	Match	PAR,PL1,SSP,SIO	N/A
NV10s	-	-	326	Match	PAR,PL1,SSP,SIO	N/A
NV10	-	-	326	Match	PAR,PL1,SSP,SIO	N/A



Quick Reference Guide - DPS

DA3 side - Overview

- Update DA3 firmware
- Load files into DA3 memory
- Erase files from DA3 memory
- Copy files from/to data flash card
- Erase files from data flash cards
- Load files from data flash card

INNOVATIVE TECHNOLOGY LTD - Device Programming System Version

Device Programming Sys Options Exit

ITL DA3 connected. [Change DA3 firmware version](#)

Item	Value
Serial number	0
Firmware version	1.13
Loaded files	0

Files on DA3...

Device	Dataset	Firmware	Update mode	I/F after update
--------	---------	----------	-------------	------------------

DA3 Card A Card B

Update Files Load Files Erase Load Files Erase Load Files Erase

Copy -----> <----- Copy Copy ----->



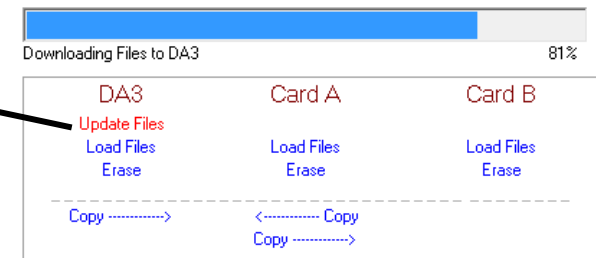
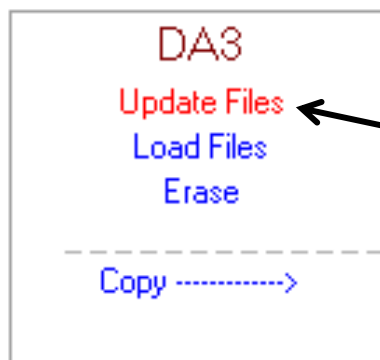
Quick Reference Guide - DPS

DA3 side – update DA3 with configured files

- Click on **Update Files** to store the files in the DA3 memory

Updating files to DA3..

Device	Dataset	Firmware	Update mode	I/F after update
NV9_11USB	EUR02B06	342	Override	SSP
NV10USB	EUR02116	331	Match	SSP
NV9	EUR02912	-	Match	-
NV9	-	322	Match	N/A
NV9s	-	322	Match	N/A
NV10	EUR02116	-	Override	-
NV10	-	326	Override	N/A
NV10s	-	326	Override	N/A



Quick Reference Guide - DPS

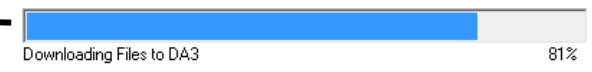
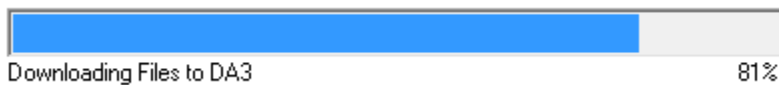
DA3 side – update DA3 with configured files

- A status bar indicates the progress of the DA3 update

Do not remove the USB cable during the download as this may result in a corrupted DA3 memory!

Updating files to DA3..

Device	Dataset	Firmware	Update mode	I/F after update
NV9_11USB	EUR02B06	342	Override	SSP
NV10USB	EUR02116	331	Match	SSP
NV9	EUR02912	-	Match	-
NV9	-	322	Match	N/A
NV9s	-	322	Match	N/A
NV10	EUR02116	-	Override	-
NV10	-	326	Override	N/A
NV10s	-	326	Override	N/A



DA3	Card A	Card B
Update Files		
Load Files	Load Files	Load Files
Erase	Erase	Erase

Copy ----->	<----- Copy	Copy ----->



Quick Reference Guide - DPS

DA3 side – update DA3 with configured files

In this example the DA3 is now able to:

- Override NV9USB/NV11 with EUR02 dataset, 3.42 firmware and SSP interface
- Match download for NV10USB programmed with EUR02 dataset
- Match download for NV9 programmed with EUR02 dataset
- Override NV10 with EUR02 dataset, 3.26 firmware and MDB interface

INNOVATIVE TECHNOLOGY LTD - Device Programming System Version

Device Programming Sys Options Exit

ITL DA3 connected. [Change DA3 firmware version](#)

Item	Value
Serial number	0
Firmware version	1.13
Loaded files	8

Files on DA3...

Device	Dataset	Firmware	Update mode	I/F after update
NV9_11USB	EUR02	342	Override	SSP
NV10USB	EUR02	331	Match	N/A
NV9	EUR02		Match	N/A
NV10	EUR02		Override	N/A
NV9		322	Match	N/A
NV9s		322	Match	N/A
NV10		326	Override	N/A
NV10s		326	Override	N/A

DA3 Card A Card B

Update Files Load Files Load Files
Load Files Load Files Load Files
Erase Erase Erase

Copy < Copy

